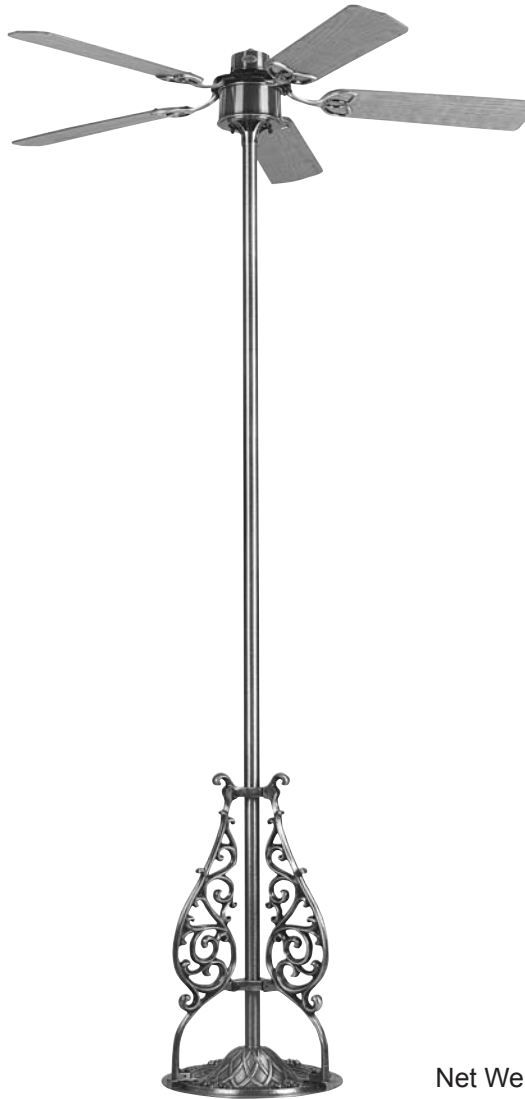


The Pedestal™

Floor Fan



Net Weight 45 lbs.

Model No. FP900

OWNER'S MANUAL

READ AND SAVE THESE INSTRUCTIONS



Important Safety Instructions

WARNING: To avoid fire, shock and serious personal injury, follow these instructions.

1. Read your owner's manual and safety information before installing your new fan. Review the accompanying assembly diagrams.
2. Before servicing or cleaning unit, switch power off at service panel and lock service panel disconnecting means to prevent power from being switched on accidentally. When the service disconnecting means cannot be locked, securely fasten a warning device, such as a tag, to the service panel.
3. Be careful of the fan and blades when cleaning, painting, or working near the fan. Always turn off the power to the fan before servicing.
4. Do not insert anything into the fan blades while the fan is operating.
5. Do not operate reversing switch until fan blades have come to a complete stop.

Additional Safety Instructions

1. To avoid possible shock, be sure electricity is turned off at the fuse box before wiring, and do not operate fan without blades.
2. All wiring must satisfy National (ANSI/ NFPA) Electrical Codes. Use the National Electrical Code if Local Codes do not exist. The ceiling fan must be grounded as a precaution against possible electrical shock. Electrical installation should be made or approved by a licensed electrician.
3. The fan base must be securely mounted and capable of reliably supporting at least 100 lbs. Outlet boxes are not acceptable for fan support. See page 5 of owner's manual for support requirements. Consult a qualified electrician if in doubt.
4. **CAUTION:** To reduce the risk of personal injury, mount the fan base to floor or structural member using the hardware provided with your fan.
5. The fan must be mounted with the fan blades at least 7 feet from the floor to prevent accidental contact with the fan blades.
6. Follow the recommended instructions for the proper method of wiring your fan. If you do not have adequate electrical knowledge or experience, have your fan installed by licensed electrician.

WARNING: To avoid fire, shock or injury, do not use a control not specifically approved for this fan.

WARNING: This product is designed to use only those parts supplied with this product and/or accessories designated specifically for use with this product. Using parts and/or accessories not designated for use with this product could result in personal injury or property damage.

WARNING: To reduce the risk of personal injury, do not bend the blade flange (blade holder) when installing, balancing, or cleaning the fan. Do not insert foreign objects in between rotating fan blades.

LIMITED LIFETIME WARRANTY

Extends to the original purchaser of a Fanimation Fan

1. **LIMITED LIFETIME MOTOR WARRANTY** - If any part of your fan motor fails, due to a defect in materials or workmanship during the lifetime of the original purchaser, Fanimation will provide the replacement part free of charge, when the defective fan is returned to our national service center. Proof of purchase is required. Customer shall be responsible for all costs incurred in the removal or reinstallation and shipping of the product for repairs or replacement.
2. **ONE YEAR MOTOR LABOR WARRANTY** - If your fan motor fails at any time within one year from the original purchase, due to defects in materials or workmanship, labor to repair the motor will be provided free of charge at our national service center. Purchaser will be responsible for labor charges after this one-year period. Customer shall be responsible for all costs incurred in the removal or reinstallation and shipping of the product for repairs or replacement.
3. If any other part of your fan fails at any time within one year after original purchase, due to a defect in materials or workmanship, we will repair, or replace, at our option, the defective part free of charge for parts and labor performed at our national service center.
4. Because of varying climate conditions, this warranty does not cover changes in the finish, including rusting, pitting, corroding, tarnishing, or peeling.
5. This warranty is void and does not apply to damage from improper installation, neglect, accident, misuse, exposure to extremes of heat or humidity, or as a result of any modification to the original product.
6. All costs of removal and reinstallation of the fan are the sole responsibility of the owner of the fan and not the store that sold the fan or Fanimation.
7. Fanimation reserves the right to modify or discontinue any product at any time and may substitute any part under this warranty.
8. Under no circumstances may a fan be returned without prior authorization from Fanimation. The receipt of purchase must accompany authorized returns and must be sent freight prepaid to Fanimation. The fan to be returned must be properly packed to avoid damage in transit; Fanimation will not be responsible for any damage resulting from improper packaging.
9. It is understood that any repair or replacement is the exclusive remedy available from Fanimation. There is no other expressed or implied warranty. Fanimation hereby disclaims any and all implied warranties, including, but not limited to those of merchantability and fitness for a particular purpose to the extent permitted by law. Some states do not allow limitations on implied warranties. Fanimation will not be liable for incidental, consequential, or special damages arising out of or in conjunction with product use or performance, except as may otherwise be accorded by law. This warranty gives you special legal rights and you may also have other rights that vary from state to state.
10. A certain amount of wobble is normal and should not be considered a problem or a defect.

Table of Contents

Unpacking Instructions	3
Electrical Requirements	4
How to Set and Operate C20 Remote Control	4
How to Set and Install Your SW50 Switch Cap Receiver	4
How to Put Your Floor Fan Together	5
Mounting the Fan Blades	6
Maintenance	6
Blade Cleaning	6
Trouble Shooting	7
Parts List	8
Exploded-View Drawing	9

This Manual is Designed to Make it as Easy as Possible for You to Assemble, Install, Operate, and Maintain Your Floor Fan

Tools Needed for Assembly

- One Phillips head screwdriver
- One stepladder
- One 1/4" blade screwdriver
- One wire stripper
- Three wire connectors (supplied)
- 7/16", 1/2" & 9/16" wrench or socket wrench

WARNING

Before assembling your floor fan, refer to section on proper method of wiring your fan (page 6). If you feel you do not have enough wiring knowledge or experience, have your fan installed by a licensed electrician.

Materials

Wiring outlet box and box connectors must be of type required by local code. The minimum wire would be a 3-conductor (2-wire with ground) of the following size:

<u>Installed Wire Length</u>	<u>Wire Size A.W.G.</u>
Up to 50 ft.	14
50 - 100 ft.	12

NOTE: Place the parts from the loose parts bags in a small container to keep them from being lost. If any parts are missing, contact your local retailer.

Unpacking Instructions

For your convenience, check-off each step. As each step is completed, place a check mark. This will ensure that all steps have been completed and will be helpful in finding your place should you be interrupted.

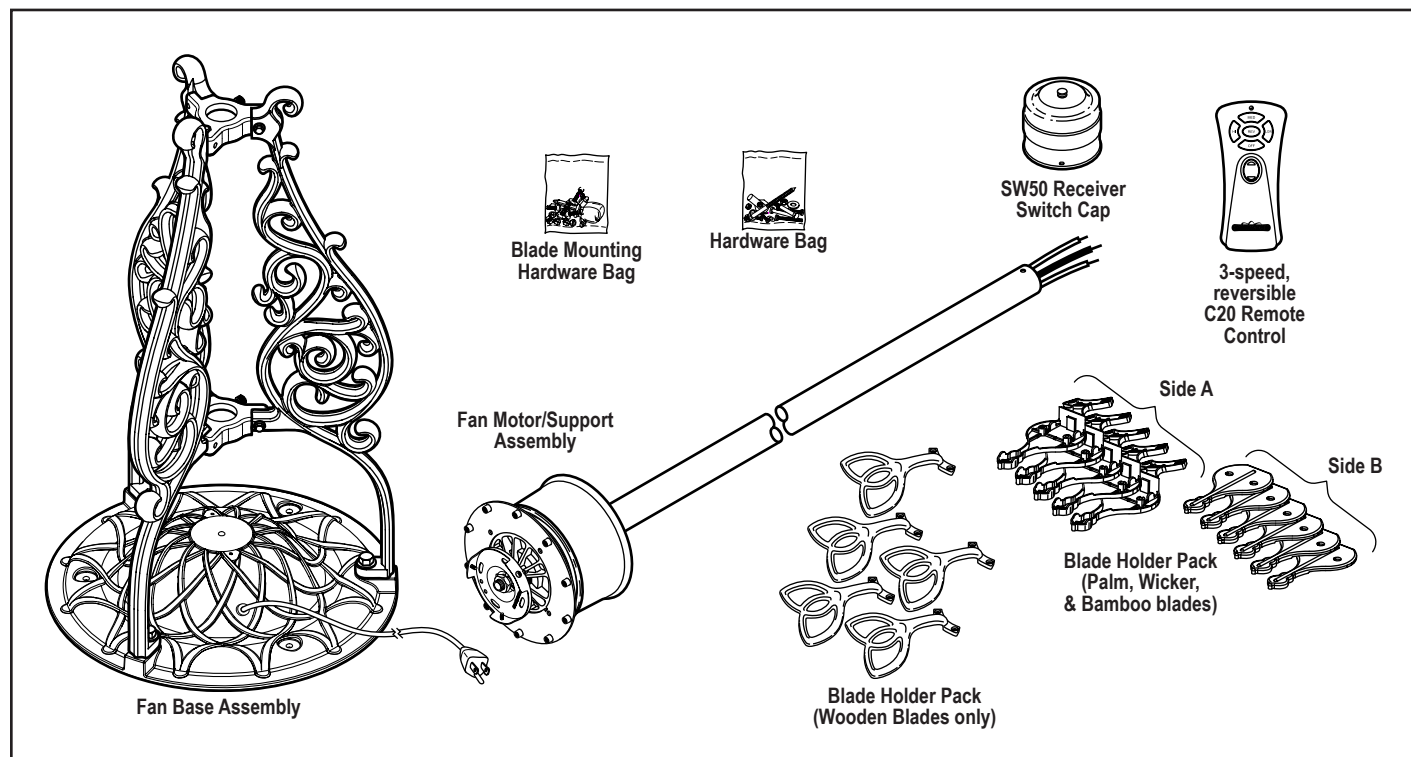
WARNING

Do not install or use fan if any part is damaged or missing. This product is designed to use only those parts supplied with this product and/or any accessories designated specifically for use with this product by Fanimation. Substitution of parts or accessories not designated for use with this product by Fanimation could result in personal injury or property damage. Contact your retail store for missing or damaged parts.

NOTE: If you are uncertain of part description, refer to exploded view illustration. (Figure 8, page 9)

Check to see that you have received the following parts:

- Fan Motor/Support Assembly
- Fan Base Assembly
- 8 ft, 3-prong, Electrical Cord
- Blade Holder pack (5)
- Blade Mounting Hardware Bag
- C20 Remote Control
- SW50 Receiver Switch Cup Unit
- Hardware bag:
 - Three 3" lag bolts
 - Three 5/16" washers
 - Three wire connectors
 - 10-32 x 1/2" flywheel screws (10 pcs)



Electrical Requirements

Your new floor fan will require a grounded electrical supply line of 120 volts AC, 60 Hz, 15 amp circuit. The fan base must be securely anchored.

WARNING

Turning off wall switch is not sufficient. To avoid possible electrical shock, be sure electricity is turned off at the main fuse box before wiring. All wiring must be in accordance with National and Local codes and the ceiling fan must be properly grounded as a precaution against possible electrical shock.

WARNING

To avoid possible fire or shock, make sure that the electrical wires are completely inside the base assembly and not pinched between the base and the floor.

WARNING

To reduce the risk of fire, electrical shock, or personal injury, mount fan to floor or structural member. The fan base does not attach directly to the outlet box, but is mounted with lag screws attached to floor or structural member.

WARNING

To avoid fire or shock, follow all wiring instructions carefully. Any electrical work not described in these instructions should be done or approved by a licensed electrician.

How to Set and Operate Your C20 Remote Control

Must operate in conjunction with SW50 Switch Cap Control Receiver (supplied with fan)

Be sure the electricity to the fan is turned off!

Setting the Code: The remote unit has 16 different code combinations. It may be necessary to test a couple frequency code settings to improve signal reception and/or eliminate interference from other remote control household items. Multiple fans should have different code settings to allow independent fan control. To set the code, perform these steps:

- **C20 Transmitter:** remove battery cover. Press firmly below arrow and slide battery cover off. Slide code switches to your choice of up or down position. Factory setting is all up. Do not use this position. With a small screwdriver or ball point pen slide firmly up or down (Figure 2).

Operating & Using Remote/Wall Transmitter:

Remove the plastic wrapping from the enclosed battery. **Install 9 volt battery** (If not using for long periods of time, remove battery to prevent damage to transmitter). Store the transmitter away from excess heat or humidity.

- HI Push Button – high fan speed
- MED Push Button – medium fan speed
- LOW Push Button – low fan speed
- REV Push Button – toggles between air upflow and air downflow
- OFF Push Button – fan off
- LIGHT Push Button – unused

C20 Hand-Held Remote



SW50 Receiver Switch Cap

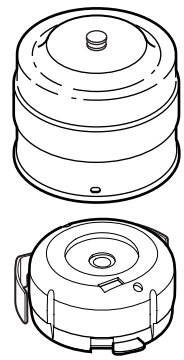


Figure 1

Remote Transmitter Unit Detail

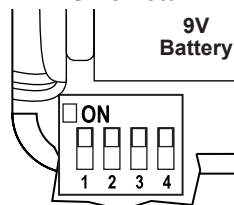


Figure 2

Receiver Unit Detail

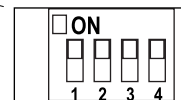
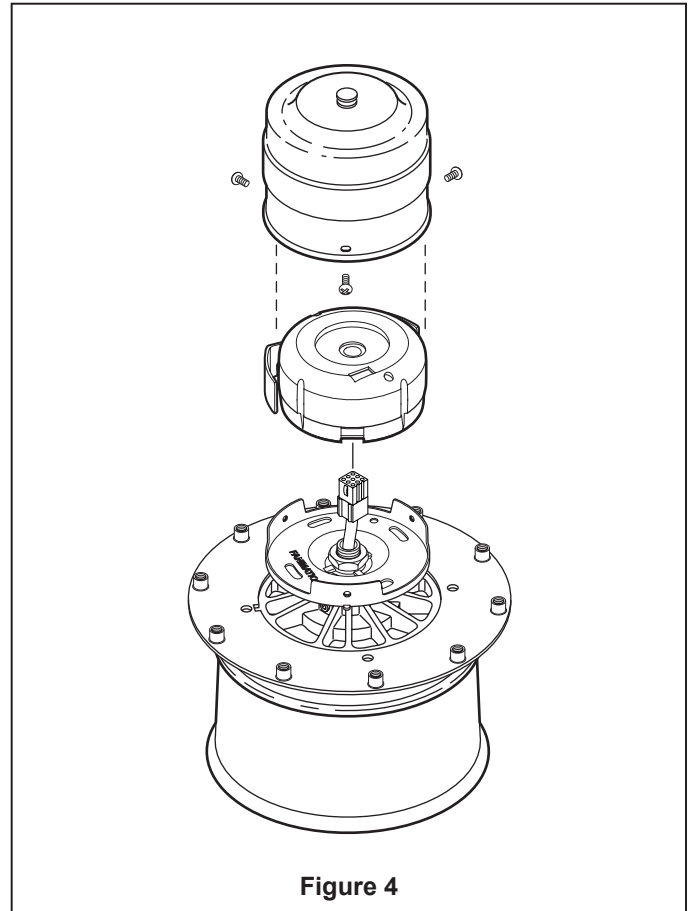


Figure 3

How to Set and Install Your SW50 Switch Cap Receiver

• SW50 Receiver:

1. Carefully, slide the remote Receiver from the Switch Cap Housing, and locate the code switches on the underside of the receiver unit (Figure 3).
2. Slide code switches to the same positions as set on your transmitter (Figures 1 and 2).
3. Slide remote Receiver into the Switch Cap, connect the plug from the fan motor assembly into the socket located in the receiver unit (Figure 4).
4. Slide the assembled Switch Cap Housing over the Switch Cap Base by installing and tightening the three screws (Figure 4).



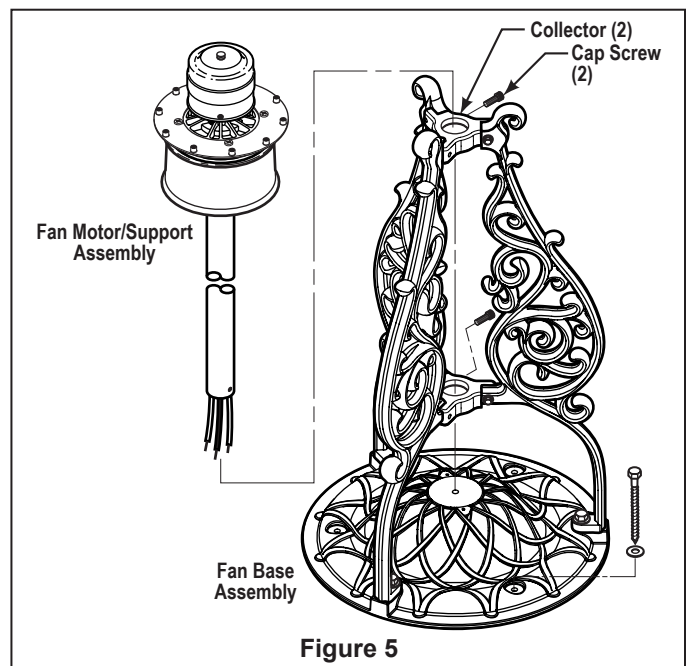
How to Put Your Floor Fan Together

1. Insert Fan Motor Support Assembly into Fan Base Assembly. Use caution when sliding fan motor support tube through the collectors (to prevent scratching of finish). Wires must be inserted through collectors and fan base.
2. Secure Fan Motor Support tube by tightening both cap-screws (Figure 5).
3. Lay assembled unit gently on its side prior to wiring your Pedestal fan.

INSTALLATION NOTE

Do not connect fan blades until the fan is completely installed. Installing the fan with blades assembled may result in damage to the fan blades.

4. You have now completed the initial assembly of your new floor fan and can now proceed with the electrical wiring and mounting of your fan.



Mounting the Fan Blades

You will find the fan blade set packed in its own carton and the blade holders and hardware bag in the base assembly carton. The hardware bag for the blade holders consists of 10 screws.

INSTALLATION NOTE

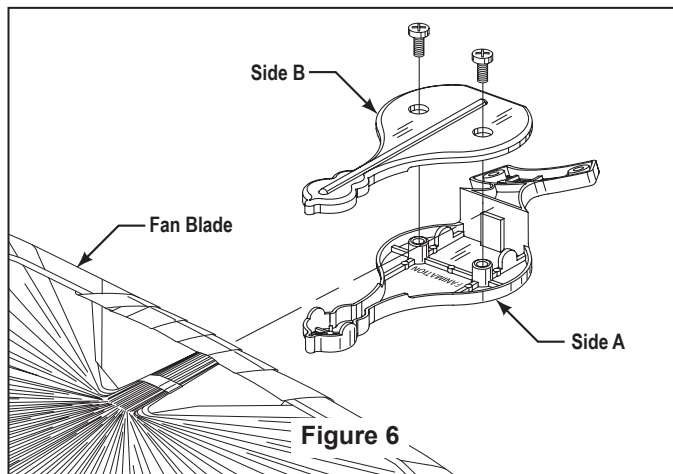
Do not connect fan blades until the fan is completely installed. Installing the fan with blades assembled may result in damage to the fan blades.

Natural Palm Leaf, Woven Bamboo, Woven Wicker Blades

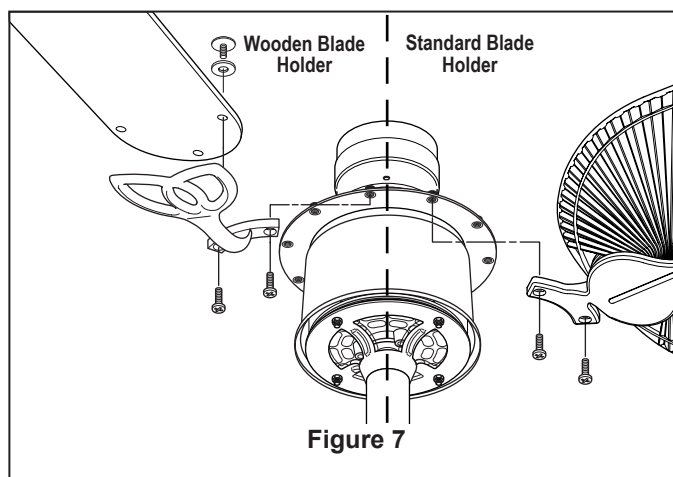
1. Lay side "A" of the blade holder on a flat surface with the inside of the blade holder facing up. This is the side with the threaded posts and pitched foot (Figure 6).
2. Position the palm leaf, or the woven bamboo blade over the blade holder with the threaded posts showing. Make sure the bottom edge of the blade is fully seated against the blade holder.
3. Place side "B" of the blade holder on top of the blade, positioning the holes over the threaded posts.
4. With a Philips screwdriver, thread both screws into the posts but do not fully tighten.
5. Prior to final tightening, position the centerline of the blade holder with the center of the end of the blade.
6. Tighten both screws to secure the blade (Figure 6).

Standard Reversible Wooden Blades

1. Mount the wooden blades on the blade holder with three sets of washer screws and fiber washers.
2. Then mount the assembled blade/blade holder onto the flywheel, secure with flywheel screws. (Figure 7)



NOTE: Optional Canvas blades and The Ococee™ kayak oar blades are available for this assembly.



⚠ WARNING

To reduce the risk of personal injury, do not bend the blade holders when installing, balancing the blades or cleaning the fan. Do not insert foreign objects in between the rotating blades.

Maintenance

Periodic cleaning of your new floor fan is the only maintenance that is needed. When cleaning, use only a soft brush or lint free cloth to avoid scratching the finish. Abrasive cleaning agents are not required and should be avoided to prevent damage to finish.

⚠ WARNING

Do not use water when cleaning your ceiling fan. It could damage the motors or the blades and create the possibility of electrical shock.

Blade Cleaning

Periodic light dusting of the Palm Leaf, Wooden, Wicker and Woven Bamboo blades is recommended. A feather

duster will work best. Avoid using water, cleansers, or harsh rags, which can warp and tear the blades.

Trouble Shooting

WARNING

For your own safety turn off power at fuse box or circuit breaker before trouble shooting your fan.

Trouble	Probable Cause	Suggested Remedy
1. FAN WILL NOT START	<ol style="list-style-type: none"> 1. Fuse or circuit breaker blown. 2. Loose power line connections to the fan, or loose switch wire connections in the switch housing. 3. Dead battery in remote control. 4. Power cord not plugged in. 5. Frequency code switches not set correctly. 6. Fan plug in switch cap not firmly seated in receiver. 	<ol style="list-style-type: none"> 1. Check main and branch circuit fuses or circuit breakers. 2. Check line wire connections to fan and switch wire connections in the switch housings. <p>CAUTION: Make sure main power is turned off !</p> <ol style="list-style-type: none"> 3. Replace with fresh battery. 4. Be sure the power cord is plugged in. 5. Set frequency code switches per instructions on page 4. 6. Be sure the plug is firmly plugged in.
2. FAN SOUNDS NOISY	<ol style="list-style-type: none"> 1. Blades not attached to fan. 2. Loose screws in motor housing. 3. Screws securing fan blade holders to motor flywheel are loose. 4. Wire connectors inside housing rattling. 5. Motor noise caused by solid state variable speed control. 6. Screws holding blades to blade holders are loose. 7. Rubber flywheel set screw loose. 	<ol style="list-style-type: none"> 1. Attach blades to fan before operating. 2. Check to make sure all screws in motor housing are snug (not over-tight). 3. Check to make sure the screws which attach the fan blade holders to the motor flywheel are tight. 4. Check to make sure wire connectors in switch housing are not rattling against each other or against the interior wall of the switch housing. <p>CAUTION: Make sure main power is turned off !</p> <ol style="list-style-type: none"> 5. Some fan motors are sensitive to signals from solid-state variable speed controls. Solid-state controls are not recommended, choose an alternative control method. 6. Tighten screws securely. 7. Tighten set screw securely.
3. FAN WOBBLER EXCESSIVELY	<ol style="list-style-type: none"> 1. Fan base bolts on the floor is loose. 2. Bolts holding the collector to the support pole are loose. 3. Screws securing fan blade holders to flywheel are loose. 4. Blade holders not seated properly. 5. Fan blades out of balance. 	<ol style="list-style-type: none"> 1. Tighten fan base bolts. 2. Tighten bolts holding the collector to the support pole. 3. Check to be sure screws which attach the fan blade holders to the flywheel are tight. 4. Check to be sure the fan blade holders seat firmly and uniformly to the surface of the flywheel. If holders are seated incorrectly, loosen the screws and retighten. 5. Interchanging position of fan blades can redistribute the weight and result in a smoother operation. For example, exchange blades in positions 1 and 3 or 1 and 4. If this does not improve wobble, exchange 2 and 4 or 2 and 5.

Parts List

Model #FP900

Ref. No.	Description	Qty	Part #
1	Switch Cap Receiver	1	SW50*
2	Pedestal Flywheel Ring	1	P905
3	Fan Motor Assembly	1	FP320*
4	Motor Support	1	P8021-85.5*
5	M/S, Washer Hd., 8-32 x 3 1/2", Black	4	
6	Lock Nut, Nylon Insert, 8-32	4	FANI1406
7	Socket Cap Screw, 5/16-24 x 3/4"	2	FASOCK908
8	Collector	2	P514*
9	Long Leg	3	P508*
10	Hex Head Bolt, 1/4-20 x 1, Black	6	FAHEX312
11	Flat Washer, 1/4" Black	9	FAWASH716
12	Hex Head Bolt, 1/4-20 x 1 1/2, Black	3	FAHEX302
13	Fan Base	1	P502*
14	Cord, 3-prong, 8 ft	1	GR1W364
15	Nut, Hex, 1/4-20, Black	3	FANUT810
16	Blade Holder (pkgd when using FP1018)	5	BH*
17	Blade Holder Set (pkgd when using other blades)	1	P20DCBH*
18	Remote Control	1	C20
<i>Miscellaneous Hardware Items:</i>			
19	Screw, Lag, 5/16 x 3", Black	3	FALAG102
20	Flat Washer, 5/16 SAE, Black	3	FAWASH718
21	Screw, Mounting, Washer Head	15	
22	Washer, Fiber	15	
23	Flywheel Screws, 10-32 x 1/2", Black	14	FAPP530

*Insert Finish Codes; AB=Antique Brass, BL=Black, WH=White

Before discarding packaging materials, be certain all parts have been removed

How to Order Parts

When ordering repair parts, always give the following information:

- Part Number
- Part Description
- Ceiling Fan Model Number

Contact your retail store for repair parts.

The Pedestal™ FP900

Exploded-View

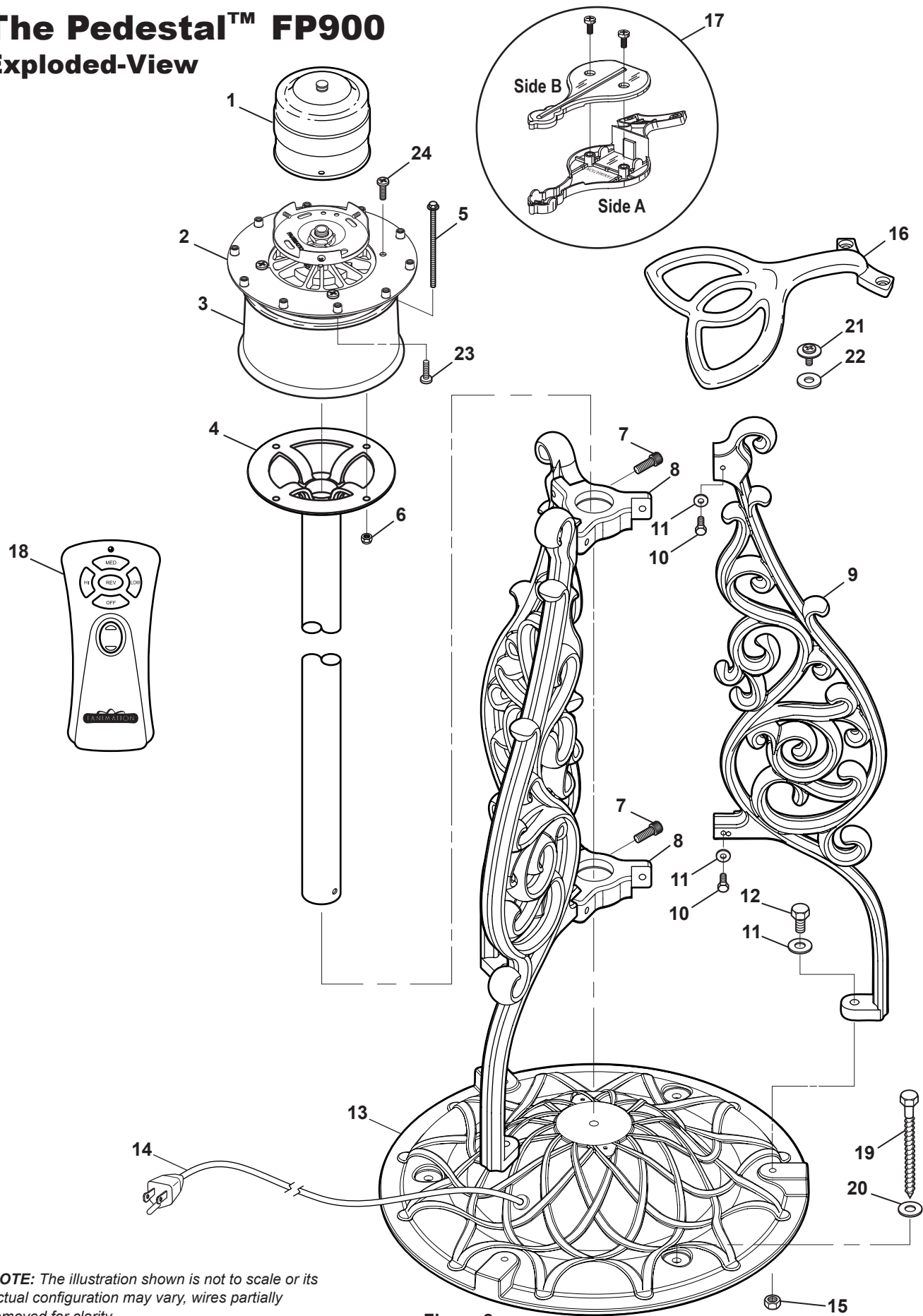


Figure 8

NOTE: The illustration shown is not to scale or its actual configuration may vary, wires partially removed for clarity.



**10983 Bennett Parkway
Zionsville, IN 46077
(888) 567-2055**

FAX (866) 482-5215

Outside U.S. call (317) 733-4113

Visit Our Website @ www.fanimation.com