

IDENTIFYING DC CONTROLS—65K CODE RUNNING CHANGE

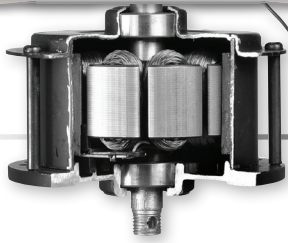
Purpose: Identify the difference between 16-code remote/wall controls and receivers and 65K-code remote/wall controls and receivers. Please note that for some models, this change is a running change and products you receive will either be pre-running change products (16-code) or new products (65K-code).

1. Affected DC Models—Running Change

- FPD6220** - The Wylde
- FPD7943** - The Jennix
- FPD8087** - The Landan
- FPD8088** - The Keystone 60" with light
- FPD8088**-NL - The Keystone 60" without light
- FPD8089** - The Keystone 72" with light
- FPD8089**-NL - The Keystone 72" without light
- MAD3250** - The Islander DC
- MAD3255** - Louvre
- MAD3260** - Sandella

Fan Model	Pre-Running Change Remote Control	Post-Running Change Remote Control	Pre-Running Change Compatible Wall Control	Post-Running Change Compatible Wall Control	Pre-Running Change Receiver	Post-Running Change Receiver
FPD6220** The Wylde	TR29	TR39	TW30**	TW40**	RECAN165M	RECAN165M-65
FPD7943** The Jennix	TR29	TR39	TW30**	TW40**	RECAN125S	RECAN125S-65
FPD8087** The Landan	TR31	TR41	TW32**	TW42**	RECAN125SS	RECAN125SS-65
FPD8088** The Keystone 60" with light	TR29	TR39	TW30**	TW40**	RECAN125S	RECAN125S-65
FPD8088**-NL The Keystone 60" without light	TR34	TR44	TW30**	TW40**	RECAN125S	RECAN125S-65
FPD8089** The Keystone 72" with light	TR29	TR39	TW30**	TW40**	RECAN165M	RECAN165M-65
FPD8089**-NL The Keystone 72" without light	TR34	TR44	TW30**	TW40**	RECAN165M	RECAN165M-65
FPD8148** The Odyn	—	TR39	—	TW40**	—	RECAN165L-65
MAD3250** The Islander DC	TR29	TR39	TW30**	TW40**	RECAN125S	RECAN125S-65
MAD3252** Name TBD	—	TR39	—	TW40**	—	RECAN165L-65
MAD3255** Louvre	TR29	TR39	TW30**	TW40**	RECAN125S	RECAN125S-65
MAD3260** Sandella	TR31	TR41	TW32**	TW42**	RECAN125SS	RECAN125SS-65

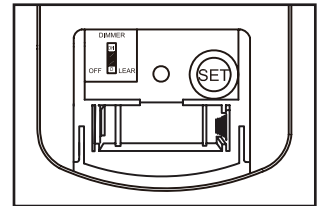
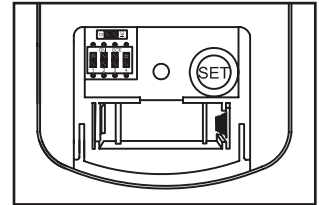
CONTINUED ON NEXT PAGE



CONTINUED FROM PREVIOUS PAGE

2. Explanation of differences:

- a. The RECAN125S, RECAN125SS, and the RECAN165M have only 16 codes available. This is noticeable by the block of dipswitches in the battery compartment of the corresponding remote control transmitter.
 - i. The wall controls that will work in conjunction to these controls are the TW30WH/LA and TW32WH/LA.
 - ii. Hand held remote control part numbers are TR29, TR31 and TR34.
 - iii. Hand held remote control bodies are metallic dark grey in color.
- b. The RECAN125S-65, RECAN125SS-65, RECAN165M-65 and RECAN165L-65 receivers have 65,000 possible codes. This is noticeable by the absence of the block of dipswitches in the battery compartment of the corresponding hand held control.
 - i. The wall controls that will work in conjunction with these controls are the TW40WH/LA and TW42WH/LA.
 - ii. Hand held remote control part numbers are TR39, TR41 and TR44.
 - iii. Hand held remote control bodies are matte black in color.



3. Compatibility notes:

- a. RECAN125S / RECAN165M
 - i. The appropriate hand held for this receiver is the TR29 or TR34
 - ii. The appropriate wall control for this receiver is the TW30WH
 - iii. The TR31/39/41/44 and TW32/40/42 will not operate this receiver
- b. RECAN125SS
 - i. The appropriate hand held for this receiver is the TR31.
 - ii. The appropriate wall control for this receiver is the TW32WH.
 - iii. The TR29/34/39/41/44 and TW30/40/42 will not operate this device.
- c. RECAN125S-65 / 165M-65 / 165L-65
 - i. The appropriate hand held for this receiver is the TR39 or TR44.
 - ii. The appropriate wall control for this receiver is the TW40WH.
 - iii. The TR29/31/34/41 and TW30/32/42 will not operate this device.
- d. RECAN125SS-65
 - i. The appropriate hand held for this receiver is the TR41.
 - ii. The appropriate wall control for this receiver is the TW42WH.
 - iii. The TR29/31/34/39/44 and TW30/32/40 will not operate this device.

REV 1.3
08/28/2012