

LK4620** Down Light Kit Installation Instructions

READ AND SAVE THESE INSTRUCTIONS

Weight: 7.5 lbs (3.4 kgs)

NOTE: This LK Accessory is to be used for the Zonix™ Ceiling Fan only.



▲ WARNING

Use only with light kits marked suitable for use in damp locations.

CAUTION

Turning off wall switch is not sufficient. To reduce the risk of fire and electrical shock, be sure electricity is turned off at the main fuse box to the fan before installing the accessory.

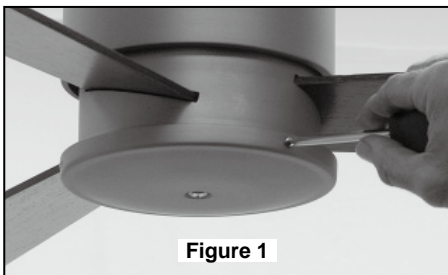


Figure 1

Fig-1. Disassemble Lower Cover Assembly by removing three screws.

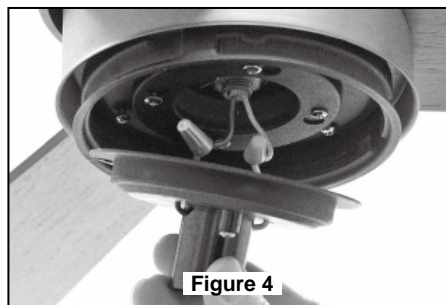


Figure 4

Fig-4. Attach and secure Support Socket's (black-to-black & white-to-white) wiring with wire nuts provided.

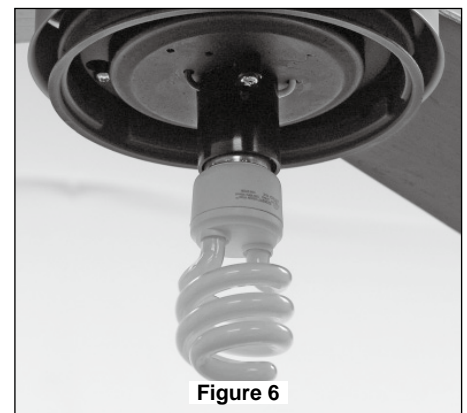


Figure 6

Fig-6. Install the 13 watt CFL bulb provided.

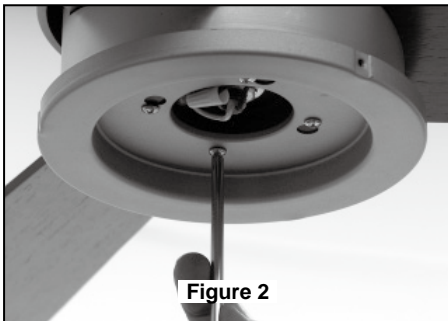


Figure 2

Fig-2. Disassemble and remove Adapter Plate, saving the screws for the next step.

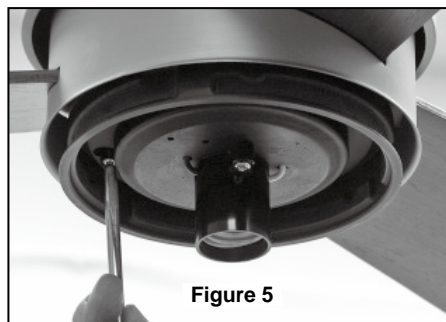


Figure 5

Fig-5. Assemble Support Socket by securing three screws.

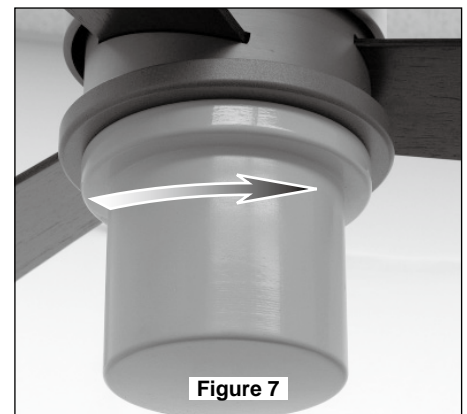


Figure 7

Fig-7. Assemble the Down Light Glass Assembly by twisting in the clockwise direction. Don't over-tighten.

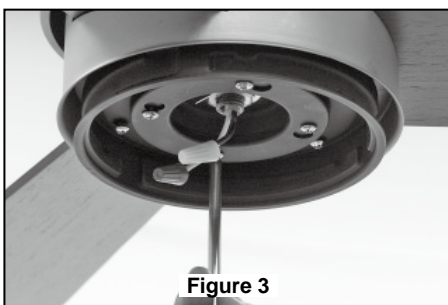


Figure 3

Fig-3. Assemble Support Plate by securing 4 screws.

▲ WARNING

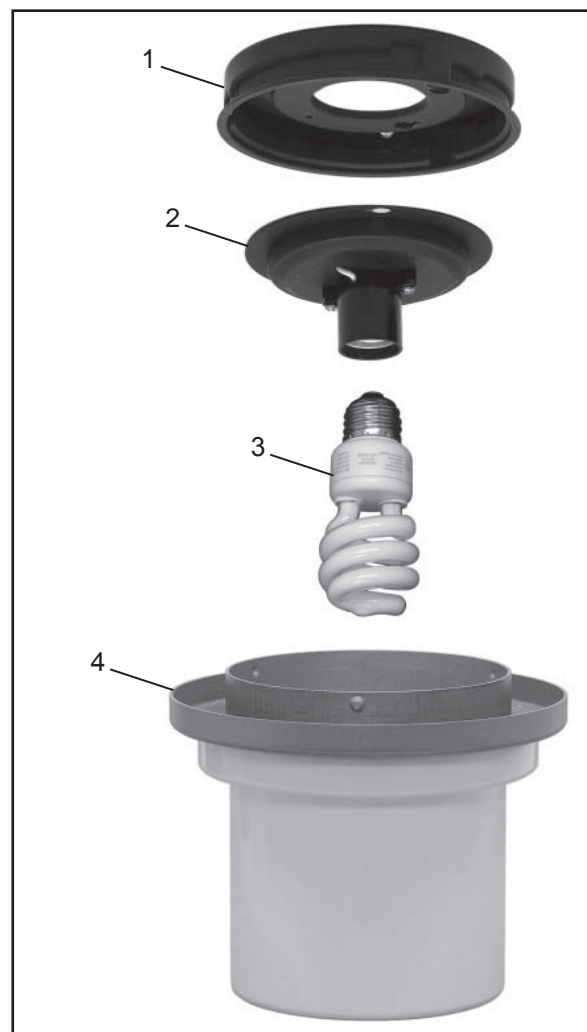
To avoid possible shock, do not pinch wires between the Support Plate and the Support Socket.

Fig-8. Restore electrical power.

LK4620** Down Light Kit Service Parts

Parts List - LK4620**

Item #	Description	Qty.	Part #
1	Support W/Lock Assembly	1	AP462070CH
2	Support Socket Assembly	1	AP462071WH
3	13 watt CFL Bulb	1	PPE27C13
4	Glass Assembly	1	AP462072**



Before discarding packaging materials, be certain all parts have been removed

How To Order Parts

When ordering repair parts, always give the following information:

- Part Number
- Part Description
- Fan Model Number

Contact your retail store for repair parts.

